



PacifiCorp Wildfire Mitigation Planning Overview

April 7, 2026

Brandon Capps
State Wildfire Mitigation Program Manager



1



Agenda

Wildfire Risk & Mitigation Overview

- Why wildfire mitigation matters
- Wildfire mitigation approach
- Oregon service area & areas of heightened risk

2025 Program Highlights & Conditions

- 2025 accomplishments
- Energy Release Conditions

System Hardening & Operational Readiness

- System strengthening and resiliency
- Situational awareness
- Operational practices

Collaboration & Response

- Public safety partner engagement
- Wildfire response



2



Wildfire mitigation planning in Oregon

- Filed on a triennial basis followed by annual updates
- Rulemaking launched in 2020 via (AR 638) to establish risk-based wildfire mitigation requirements for electric utilities
- Senate Bill 762 (2021) established statutory requirements for electric utility wildfire mitigation plans and directed the Commission to adopt rules governing plan content, evaluation criteria, and reporting.
- Built on Governor’s Council recommendations and Executive Order 20-04
- 2026–2028 Wildfire Mitigation Plan aligns with OAR 860-300-0020 and incorporates regulator and stakeholder input via UM 2207 and UM 2340

3



Wildfire mitigation approach

Long-term risk modeling	System strengthening	Situational awareness	Operational practices	Engagement
<ul style="list-style-type: none"> • Risk modeling to inform strategic programs and investments 	<ul style="list-style-type: none"> • Enhanced equipment inspections and vegetation management • Line rebuilds, fault indicators and sectionalizing 	<ul style="list-style-type: none"> • Short-term forecasting to inform operational practices 	<ul style="list-style-type: none"> • Implement operational strategies during fire risk periods • Enable sensitive protection settings 	<ul style="list-style-type: none"> • Outreach to customers and the communities we serve • Collaboration with partners

4



About PacifiCorp

Service Area

- 637,000+ Oregon customers
- 170 cities served
- 291 substations
- 3,000+ miles of transmission lines
- 19,000+ miles of distribution lines
- 21,000+ square miles
- 21% of service territory in HFRZ
- 3,616 overhead miles in HFRZ



5



Energy release condition overview

An "Energy Release Condition" is a type of condition that, under certain circumstances, can correlate to increase risk of a fault event and potential release of energy at the location of the condition

If either of the following communications conditions are found on a pole in an HFRZ, the conditions are considered energy release:

- Loose or broken lashing wire
- Broken guy or pulled anchor



6



Energy release conditions

OAR 860-24-0018 (6) requires that energy release conditions be communicated to the equipment owner in violation within **15 days of discovery**

PacifiCorp requires these conditions be **corrected within 30 days**

- Conditions are communicated through a web-based Joint Use portal called Varasset
 - In **2024**, PacifiCorp found and communicated 78 energy release conditions
 - In **2025**, PacifiCorp found and communicated 75 energy release conditions



7



2025 accomplishments

Situational Awareness

- Installed 8 weather stations
- Launched Wildfire Intelligence Center

Engagement

- Hosted nine public wildfire forums
- Participated in 22 community and public safety partner outreach events
- Fire and Emergency Response Managers

System Resiliency and Strengthening

- Over 19,000 incremental trees pruned or removed and over 36,700 poles cleared
- Inspected over 535,000 transmission and distribution facilities (417,000 visual, 73,000 detailed, and 44,000 drone/helicopter)
- Upgraded or replaced 91 relays, breakers and reclosers
- Rebuilt 182 miles of overhead lines with covered conductor
- Installed 742 communicating fault current indicators (CFCIs)
- Replacement of over 8,637 expulsion fuses

8



System strengthening

Distribution

- Line rebuilds (covered conductor or undergrounding)
 - Reduce ignition likelihood in higher-risk areas
 - 165 – 172 miles/year
- Replace or install system automation devices
 - Advance enhanced safety setting capabilities
 - 68 units/year
- Install fault detection devices
 - Early detection and faster response to faults
 - Replace 8,000 expulsion fuses in 2026



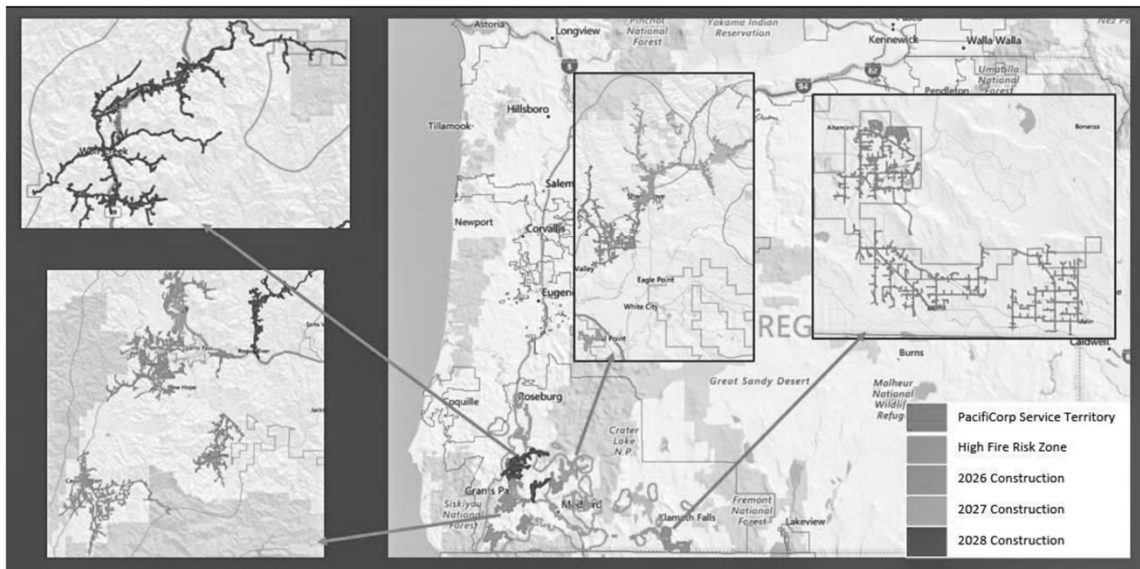
Transmission

- Traditional overhead strengthening
 - 8 – 15 miles/year

9



System strengthening locations



10



System resiliency

Equipment Inspections

- **New:** Annual safety patrol inspections for all overhead lines in the service territory
- Annual infrared inspection of transmission lines interconnected with HFRZ
- Biennial infrared inspection of transmission lines outside of HFRZ

Inspection Type	Cycle
Detail	5 year
Safety Patrol	1 year

Vegetation Management

- Annual inspection in the High Fire Risk Zone
- Annual clearing of power poles with equipment
- Regular review of best practices

11

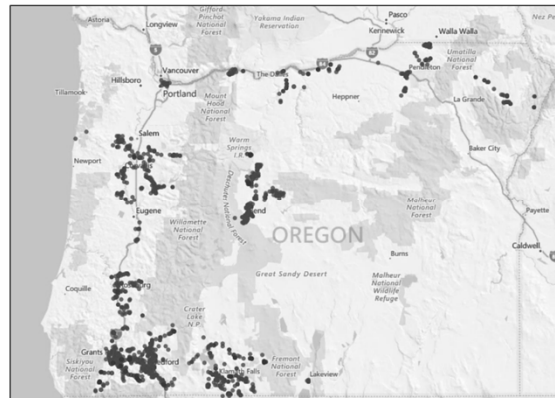


De energization Impacts

The safety of our customers and communities is our top priority

2025 Wildfire De-energizations

- 1,642 Enhanced Safety Settings-related outages
- 19 Emergency De-energization-related outages
- 1,229 fires monitored by the Wildfire Intelligence Center in 2025

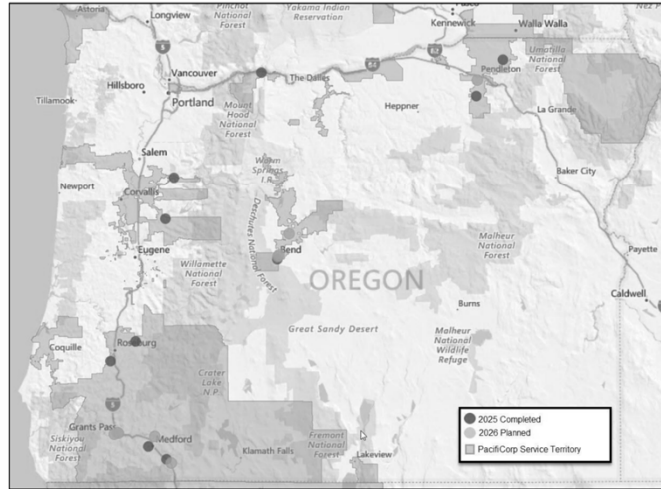


12



Enhanced Safety Settings Updates

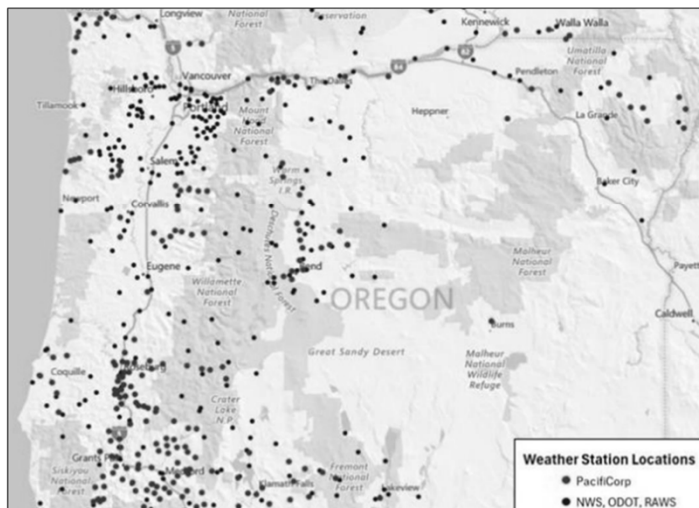
- ESS Circuit Hardening Program Deployment of additional automation and sectionalizing devices
- Enhanced ability to selectively apply ESS through finer circuit segmentation



13



Situational Awareness Resource Sharing



- Weather Station Network
- Wildfire Detection Cameras
- Public Safety Partner Portal
- Links to weather stations and cameras available at:



14



Public safety partner engagement

Ongoing coordination

- Emergency managers assigned to regions
- Meetings with county and city emergency managers
- Oregon Emergency Management Association meetings and conferences
- Community safety forums
- Public safety partner summit

Trainings and exercises

- Attend public safety partner trainings and exercises when requested
- Hold internal trainings and exercises



Situational awareness

- Public Safety Partner Portal
- Wildfire Intelligence Center
- Fire and emergency response managers



15



Wildfire response

Emergency Management Team

- Develop an overall strategy for coordination with state, federal, and local emergency management teams
- Maintains agency relationships

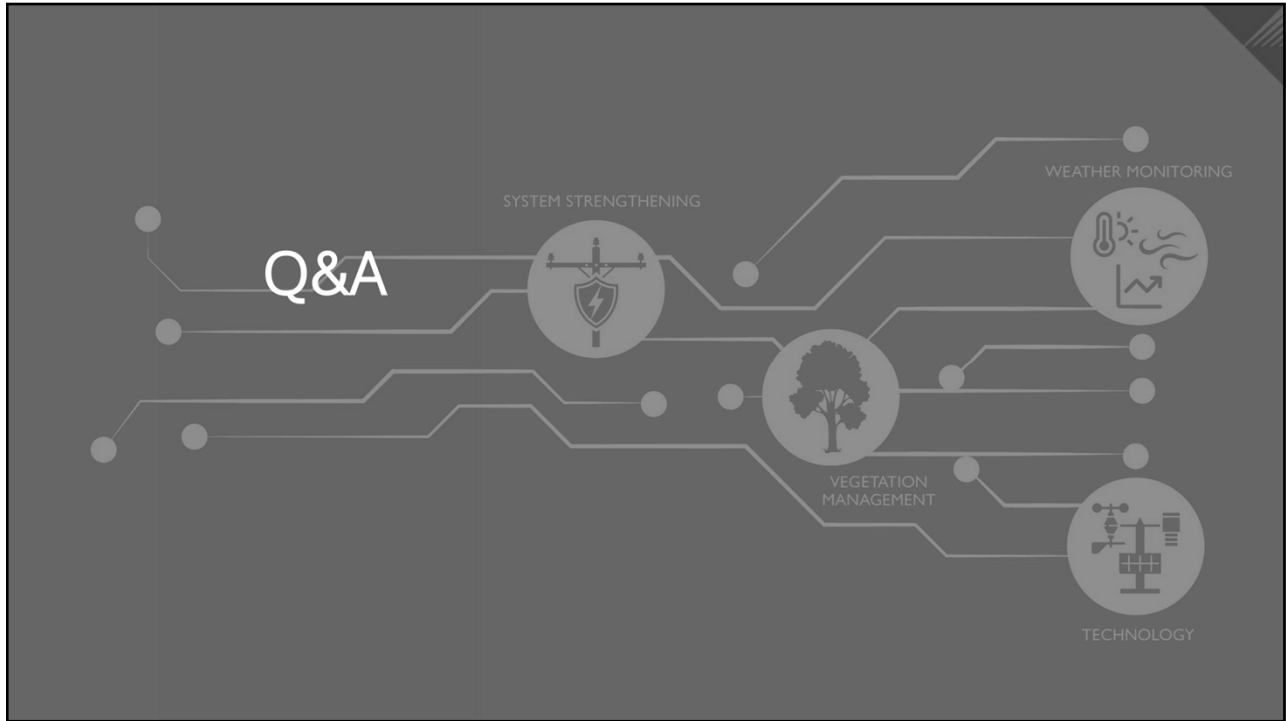
Fire Emergency Response Managers

- Lead response and coordination during wildfires
- Responds to wildfires across service area

Wildfire Intelligence Center

- Provides 24/7 monitoring and operational support
- Analyzes threats using a complexity-based decision matrix

16



17



For additional comments and questions, email us at:
WildfireSafety@pacificorp.com



2026-2028 Oregon Wildfire Mitigation Plan



18